



Planning Commission

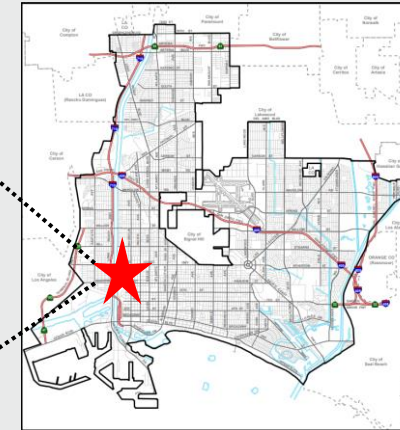
August 1, 2024

2111 W 14th Street

General Plan Conformity finding for the vacation of public right of way at the end of 14th Street adjacent to 2111 W 14th Street in conjunction with a previously approved industrial building (App no. 1802-28) located in the General Industrial Zoning District (IG). (District 7)

Application No. 2404-09 (GPC24-001)

Vicinity Map



- PlaceType: Industrial
- Zoning: General Industrial

Background

- Previously approved 38,400 SF, 2-story industrial building at 2111 W 14th St (App no. 1802-28)
- Conditions included an alley dedication and vacation of excess public right of way

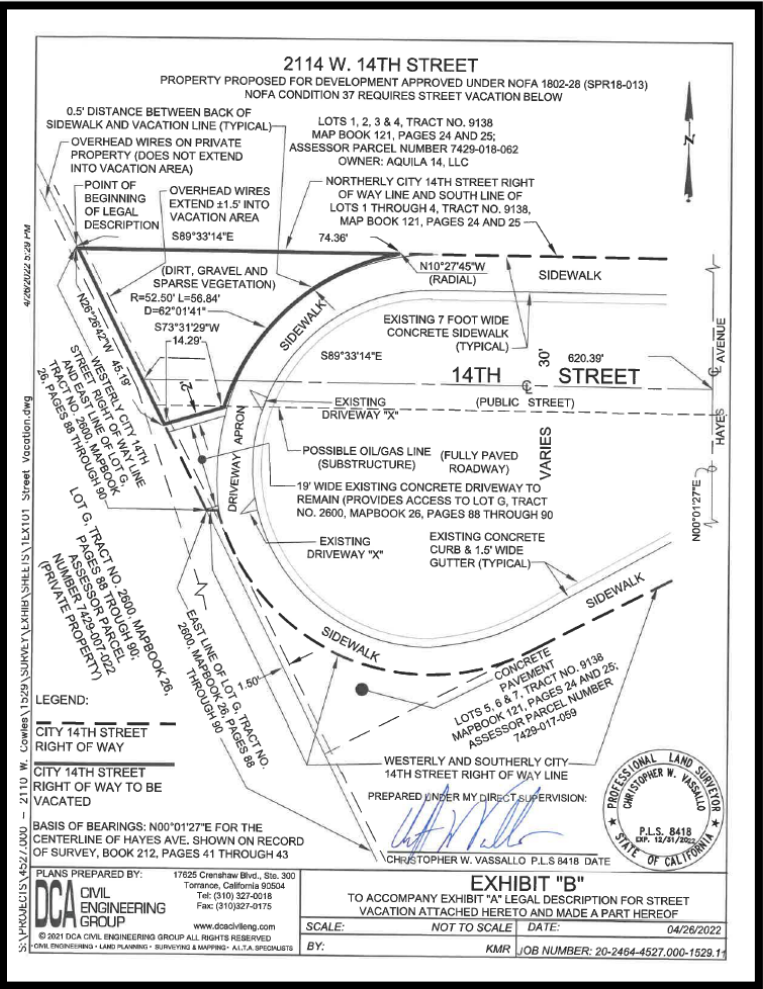


Proposed vacation



- 1,387 SF right of way
- Adjacent to 2111 West 14th Street

General Plan Conformity



General Plan

Land Use

Industrial PlaceType is intended for general heavy industry

Mobility

Vehicular and pedestrian access of adequate size and features

Recommendation

- Recommend to City Council that the vacation of a portion of public right of way is in conformance with the adopted goals and policies of the General Plan



Thank you

Jonathan Iniesta

Planner

Community Development Department

Jonathan.Iniesta@longbeach.gov