



Measure A Infrastructure Projects Update

Department of Public Works

March 20, 2024



Measure A Infrastructure Investments to Date

Categories	FY 17 - FY 24 Adjusted Budget
Beaches and Marinas	1.05
Mobility	140.83
Parks and Recreation	67.84
Public Facilities	78.10
Utilities - Stormwater Protection	5.20
Total	\$293.02

*All dollar amounts reflected in millions

Key Highlights

- 45 park playgrounds, community centers, and park facility projects completed;
- Over 526 lane miles of streets repaired.
- Over 121 miles of streets have been slurry sealed.
- 17.5 miles of alleys rehabilitated, of which 5.23 miles were formerly dirt. In FY24 alone, nearly 4.5 miles of alleys rehabilitated.
- Over 1,804,984 sq. ft. of sidewalks replaced and 3,475 curb ramps replaced.
- 26 Public Facility projects completed, including:
 - 6 fire station projects,
 - 9 health and public safety projects, and
 - 9 library projects.



Completed Mobility Projects

Mobility	Approved Budget
Alley Improvements	\$11,164,423*
Alley Management Plan	\$300,000
Arterial Streets	\$42,375,928*
City Place Parking Structure C	\$1,450,000
Curbs and Sidewalks	\$37,600,000*
Naples West Bridge	\$100,000
Residential Streets	\$37,940,316*
Street Signage	\$200,000
Smart Street Light Technology	\$500,000*

*Partially completed

Program	Lane Miles		% of Original Plan Completed
	ITD	FY 24	
Alley Improvements	17.42	4.55	98%
Arterial Streets	157.13	0	77%
Residential Streets	370.33	8.90	92%



Completed Alleys

Alley South of 2ND ST- ESPERANZA AVE to FALCON AVE



Before



After

Completed Alleys

East/West Alley East of AIRPORT LN from AIRPORT LN to North/South Alley East of AIRPORT LN



Before



After

Completed Alleys

North/South Alley East of CLARK AVE - GREENBRIER RD to HARCO ST



Before



After

Completed Alleys

North/South Alley east of CEDAR AVE - W WARDLOW ROAD NORTH SERVICE ROAD to NORTH END



Before



After

Completed Curbs and Ramps

SW Fashion Ave & Willow St



Before



After

Completed Curbs and Ramps

SW Fashion Ave & Spring St



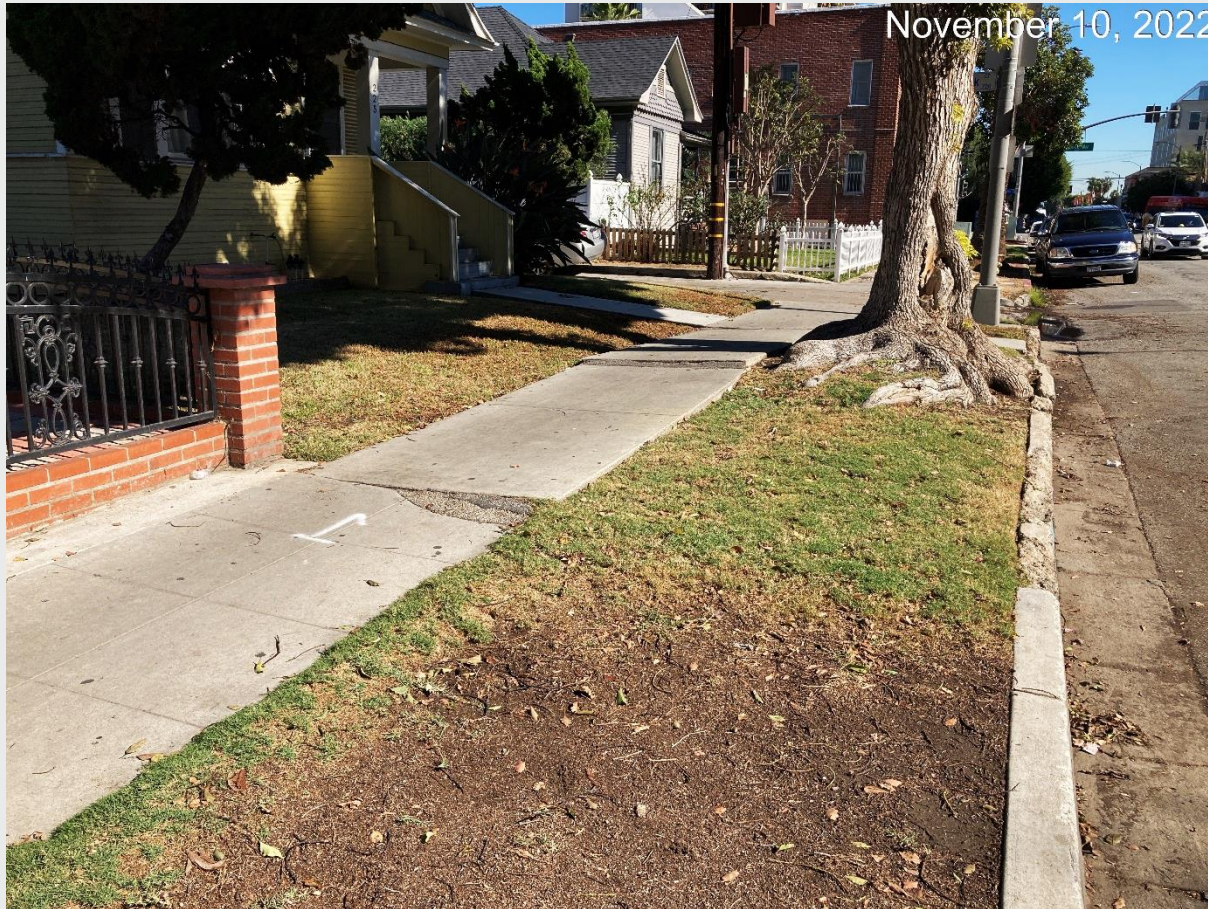
Before



After

Completed Sidewalks

Sidewalk on 200 block of West 7th St.



Before



After

Completed Sidewalks

Sidewalk on 3000 block of East 1st St.



Before



After

Completed Sidewalks

Sidewalk on 1500 block of Gardenia Ave.



Before



After

Completed Residential Streets

De Forest Avenue between 32nd St and 34th St



Before



After

Completed Residential Streets

Gale Avenue between Delta Ave End Easy Ave



Before



After

Completed Residential Streets

Maine Avenue between 31st St and Wardlow Rd



Before



After

Completed Residential Streets

Pine Ave from 14th St to PCH



Before



After

Completed Parks & Recreation Projects

Parks & Recreation	Approved Budget
Colorado Lagoon Playground [Beaches]	\$150,000
4 th Street Senior Center Upgrades	\$820,000
Admiral Kidd Park Playground Replacement	\$1,025,000
Bixby Park Community Center	\$450,000
Bixby Park Parcel 1	\$350,000
Cal Rec / McBride Park Community Center	\$1,300,000
Cherry Park Playground	\$400,000
Citywide Park Irrigation	\$1,065,000
Community Center Restrooms	\$170,000
Coolidge Park - FCA	\$200,000
Davenport Park Gas Control	\$800,000
Doris-Topsy Elvord Community Center	\$5,741,896

Parks & Recreation	Approved Budget
Drake Park – Park to Field	\$500,000
Drake Park Playground	\$939,000
El Dorado Golden Grove Event Area	\$870,000
El Dorado Golden Grove Playground	\$500,000
El Dorado Park Artificial Turf	\$1,950,000
El Dorado Park Restrooms #38 & #43	\$110,000
El Dorado Park Restrooms #40 & #41	\$360,000
El Dorado Tennis Center	\$150,000
Heartwell Park Field Turf	\$320,000
Jackson Park Playground	\$150,000
Jenni Rivera Park Playground	\$250,000

Completed Parks & Recreation Projects (cont.)

Parks & Recreation	Approved Budget
Los Cerritos Park Playground	\$1,000,000
Los Cerritos Park Sports Court	\$100,000
MacArthur Park	\$56,000
MacArthur Park Restroom	\$750,000
Martin Luther King Jr. Park	\$42,000
Martin Luther King Jr. Pool (Phase I)	\$150,000
Pan American Park	\$160,000
Rancho Los Alamitos	\$1,000,000
Rancho Los Cerritos	\$1,000,000
Recreation Park Signature Playground	\$1,900,000
Red Car Greenbelt	\$300,000

Parks & Recreation	Approved Budget
Silverado Park Field Turf	\$480,000
Silverado Park Upgrades	\$100,000
Silverado Park Sports Courts	\$100,000
Stearns Park Community Center	\$800,915
Urban Forest Investment	\$845,000
Veterans Park Community Center	\$160,000
Veterans Park Community Center Roof	\$650,000
Veterans Park Playground	\$963,000
Wardlow Park ADA Restroom	\$750,000
Wardlow Park Community Center Roof	\$550,000
Whaley Park Playground	\$906,000
TOTAL	\$31,333,811

Davenport Park Gas Control

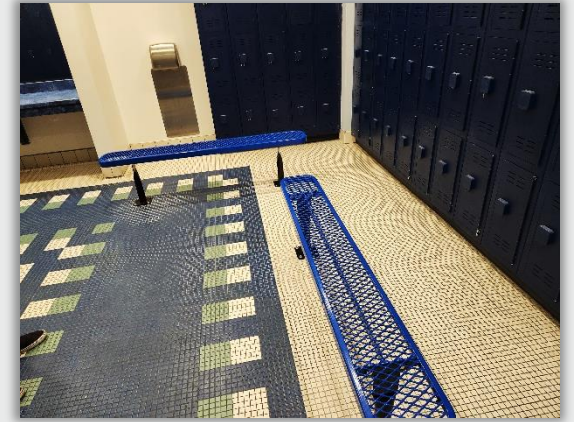


Before



After

Martin Luther King Jr. Pool Improvements (Phase I)



Veterans Park Community Center Roof



Before



After

Completed Public Facilities Projects

Public Facilities	Approved Budget
Alamitos Branch Library	\$941,000
Animal Care Facility (Phase One)	\$150,000
Brewitt Branch Library	\$62,000
Burnett Branch Library	\$160,500
Central Health	\$400,000
City Place Parking Garage	\$1,450,000
Citywide Security Cameras	\$250,000
Dana Branch Library	\$103,000
Emergency Communications & Ops	\$830,000
Expo Building	\$288,000
Facility Condition Assessment & Improvements	\$1,950,000
Fire Station 1 Roof Improvements	\$400,000
Fire Station 7	\$105,000
Fire Station 10	\$177,000

Public Facilities	Approved Budget
Fire Station 17	\$35,000
Fire Station 22 Concrete (Critical Repair)	\$35,000
Fire Station Roofs	\$650,000
Harte Library Improvements	\$102,000
Library Roofs	\$280,000
Los Altos Library	\$58,500
Main Health Facilities Center	\$900,000
Mark Twain Library Door	\$47,000
Public Safety Building (Phase 1 & 2)	\$1,000,000
Ronald R. Arias Health Equity Center	\$1,000,000
Ruth Bach Branch Library	\$67,000
West Division Police Station	\$500,000
TOTAL	\$11,941,000

Measure A Projects to be Completed by Summer 2024

Project	Approved Budget
14th Street Park Lighting and Playground Improvements	\$1,250,000
Animal Care Services Facility Improvements	\$200,000
Bluff Park Historic Lamps (Phase III)	\$850,000
City Place Parking Garage Mural & Structure	\$300,000
Drake/Chavez Greenbelt 4-acre Wetland Expansion	\$1,000,000
Drake Park – Restroom Replacement	\$1,130,000
Joe Rodgers Field	\$600,000
Rehabilitate El Dorado Duck Pond	\$4,379,000
Rose Park Gazebo Painting and Landscaping	\$100,000
Scherer Park Community Center Improvements	\$1,550,000

Duck Pond Update

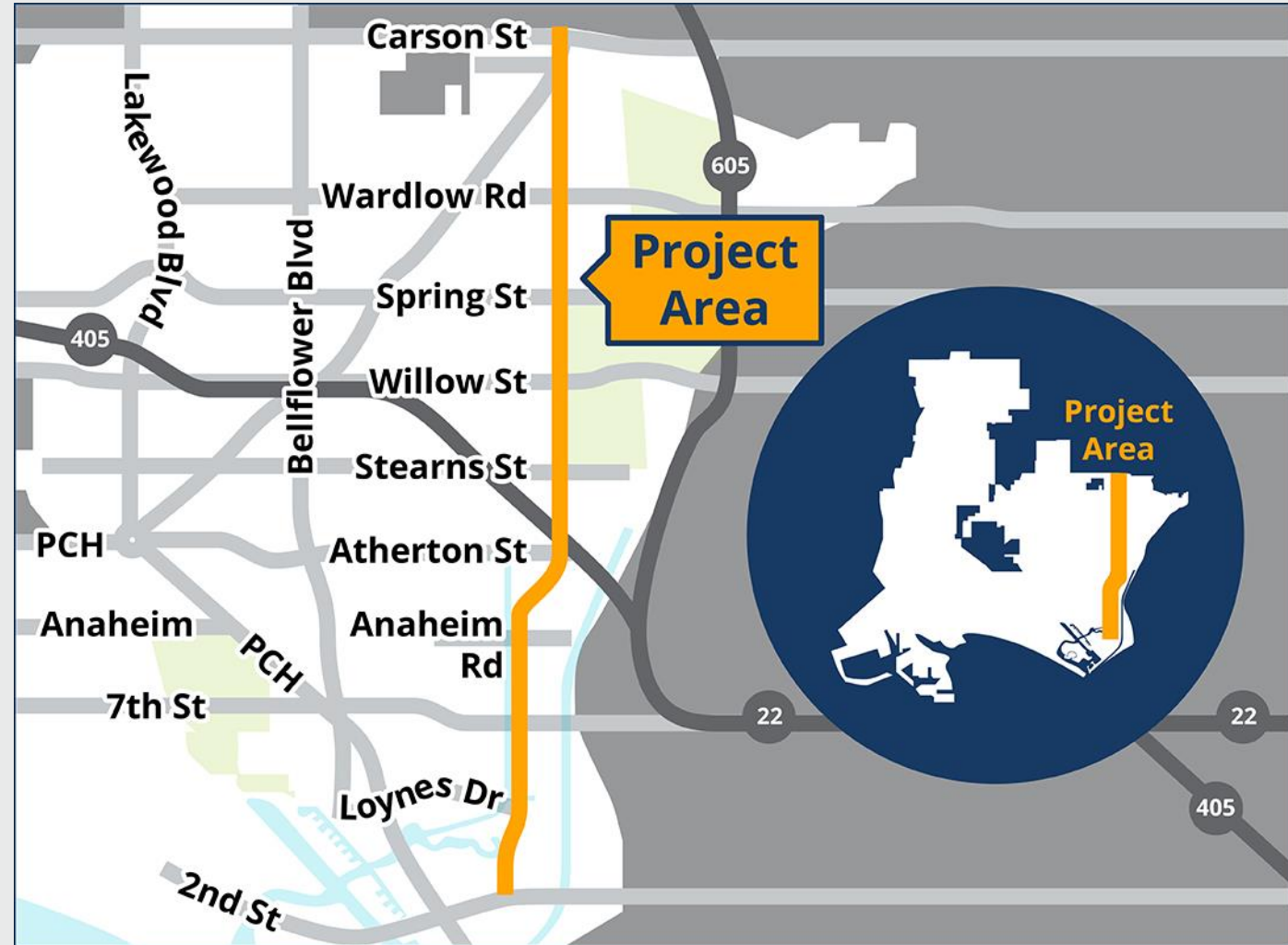
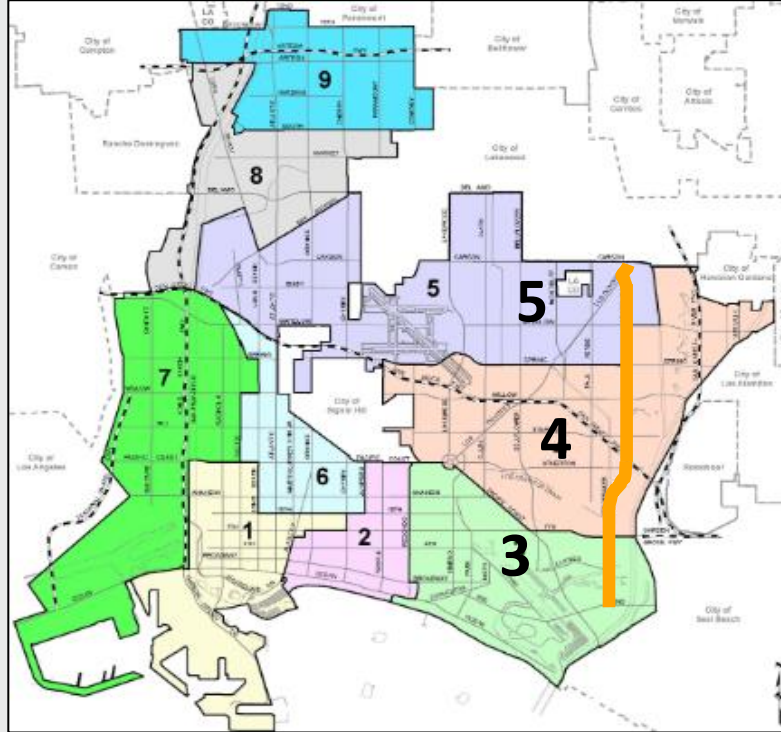


Duck Pond Update



STUDEBAKER CORRIDOR COMPLETE STREET PROJECT

Project Location and Project Limits



STUDEBAKER CORRIDOR COMPLETE STREET PROJECT

Project Overview



Roadway Improvements



Separated Bikeways



Bus Stop Improvements



Curb Enhancements &
Protected Intersections



Landscape/Irrigation
Improvements



Fiber Optic
Communication



Traffic Signal Improvements



ADA Improvements

STUDEBAKER CORRIDOR COMPLETE STREET PROJECT

Projected Schedule

Activity/Task/Milestone	Finish / Expected
Feasibility Study	Done
Design Development & Permitting (100% Design Package Received)	Ongoing
Bid Opening	Late Spring 2024
Construction Start Target	Late Summer 2024
Estimated Construction Duration	18-20 Months

STUDEBAKER CORRIDOR COMPLETE STREET PROJECT

LANDSCAPE IMPROVEMENTS

Landscape Features

The project will feature new landscaping and innovative stormwater mitigation features.

- **Medians:** Select medians throughout the corridor will be enhanced to include meandering jagged rock hardscapes in a wave pattern with new plantings. Reclaimed water will be utilized for irrigation in areas outside of the wetlands.
- **Lighting:** Installation of bollard lighting on the bikeway separator.
- **SEASP Area Considerations:** Trees, shrubs, and ground cover as identified in the Southeast Area Specific Plan (SEASP) Plant Palette will be placed along medians and parkways to the south of Anaheim Road.
- **Selected Trees:**
 - Albizia Julibrissin (Silk tree)
 - Cercis Occidentalis (Western Redbud)
 - Jacaranda Mimosifolia (Jacaranda)
 - Lyonothamnus Floribundus (Catalina Redwood)
 - Canary Island Pine (Pinus Canariensis)
 - Western sycamore (Platanus Racemosa)
 - Holly Leaf Cherry (Prunus Illicifolia)

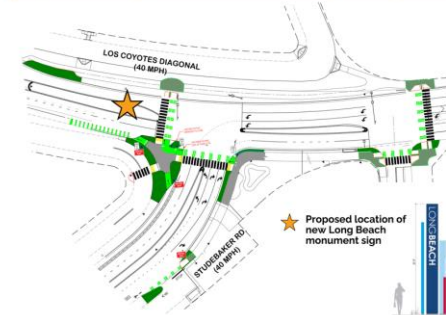
Conceptual Rendering



Above: Studebaker Road between 2nd Street and Loynes Drive
Left: Landscape Concept at Studebaker Road and Los Coyotes Diagonal

LOS COYOTES DIAGONAL IMPROVEMENTS

Proposed Redesign of Studebaker at Los Coyotes Diagonal



Intersection Overview

The intersection at Los Coyotes Diagonal will be reconfigured to provide the following safety and accessibility benefits:

- Shortened pedestrian crossing distances
- Sidewalk-level bikeways and protected intersections with new connections to pathways at Heartwell Park and the San Gabriel River
- Urban greening and water quality features
- Wider sidewalks near McBride High School
- Tighter vehicle turns that require slower speeds
- New monument signage



Above: Landscape Concept at Los Coyotes Diagonal

DESIGN OVERVIEW

Overview

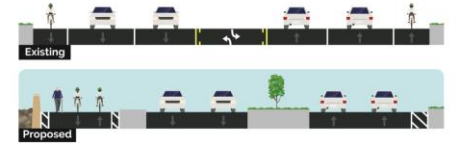
- This is **not** a road diet project.
- New walking and biking improvements will utilize existing shoulders.
- Bus islands will reduce transit dwell times. By boarding in lane, transit operators do not need to wait to pull into traffic.
- Bus arrivals are typically 30 to 40 minutes apart during peak times along Studebaker Road.

Bus Boarding Island

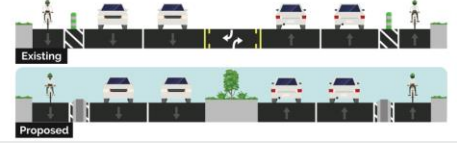


Above: Bikeway transition at a compact bus boarding island

Example Section - Second Street to Loynes Drive



Example Section - Spring Street to Wardlow Road



BIKEWAY IMPROVEMENTS

Bikeway Overview

The project will upgrade existing bike lanes and add new bike infrastructure to create a continuous and comfortable bikeway from Los Coyotes Diagonal to 2nd Street.

Bikeway Features

Connects to 2nd Street: A bi-directional bicycle and pedestrian path from Anaheim Road to 2nd Street on the west side of Studebaker Road will allow bicyclists to comfortably bypass the 5th-22 on/off-ramps at 7th Street and connect to existing bike lanes on 2nd (see rendering).



Studebaker Road at 2nd Street, Looking North



Bikeway Features Cont.



Increases separation from vehicles: Existing bike lanes will receive increased separation from vehicle traffic, including wider buffers and replacement of green bollards with concrete separators (see above).



Eliminates bus conflicts: Bus islands, as shown above on Anaheim Road, will denote clear and separate paths of travel for bicyclists and buses, while also reducing conflicts between those waiting at bus stops.

SCHOOL ADJACENT IMPROVEMENTS

Overview

The Studebaker Road Complete Streets project will benefit students and families who get to school by walking, biking, bus or personal vehicle by creating new comfortable and convenient options for all. Improvements will include shorter crossing distances, slower vehicle turns, protected lefts, new bus shelters, and pedestrian medians.



School - Specific Improvements

Sato Academy

- At Anaheim Road:
 - High-visibility crosswalks
 - Bulb-outs on south corners
 - Bike markings through the intersection
 - New connections to bike path on south side of Anaheim Road

Keller Middle School

- At Keynote Street:
 - High-visibility crosswalks
 - New bus islands with bus shelters
 - Rectangular rapid flashing beacons

At Walkerton and Harco Streets:

- New bus islands with bus shelters

McBride High School

- Los Coyotes Diagonal and Parkcrest Street:
 - High-visibility crosswalks
 - Expanded sidewalks with sidewalk-level bikeways and protected intersections
 - Bus shelters with bus islands
 - Street lighting and landscaping

Cubberly K-8 School

- At Rosebay Street:
 - High-visibility crosswalks
 - Rectangular rapid flashing beacons
 - Bus island with bus shelter

At Wardlow Road

- High-visibility crosswalks
- Protected intersection to enhance bicyclist and pedestrian safety

Tincher Preparatory School

- At Driscoll Street:
 - High-visibility crosswalks
 - Pedestrian refuge on frontage road
 - New bus islands with bus shelters
 - Signals upgraded with protected left turn arrows

At Atherton Street

- High-visibility crosswalks
- Protected intersections to enhance safety for bicyclists and pedestrians
- New bus islands with bus shelters
- Signals upgraded with protected left turn arrows

TRANSIT AND SIGNAL IMPROVEMENTS

Overview of Signal Improvements



The project includes installation of new fiber optic signal upgrades, and flashing beacons:

- New left turn protected arrows will be installed at select intersections to reduce vehicular conflicts
- Reflective backplates to enhance visibility of signal (shown above)
- Installation of fiber-optic infrastructure to improve signal synchronization and support future communication upgrades
- Rapid flashing beacons will be installed on Studebaker Road at Rosebay Street and Keynote Street

Overview of Transit Improvements

The project will improve the overall transit experience through bus stop upgrades and pedestrian enhancements.

- Bus islands will improve bus travel times by eliminating the need to merge in and out of traffic
- All bus stops will include seating; 16 new bus shelters will provide shade to transit patrons and will be placed further away from vehicle traffic.
- Placement of bus shelters and bus islands will minimize potential conflict between pedestrians and bicyclists
- Pedestrian improvements like bulb-outs and shorter crossing distances will make getting to and from bus stops less stressful



FY 24 Mid-Year Elevate '28 Measure A Appropriation

2028 Olympic Legacy	Approved Budget
Belmont Pool	500,000
Shoemaker Bridge Replacement & Shoreline Drive Realignment Planning & Design	300,000
2028 Olympic Legacy Total	\$800,000

Community & Cultural Investments	Approved Budget
African American Cultural District Feasibility Study	300,000
Cambodia Town Grand Entrance	450,000
Long Beach Historical Society Facility Improvements	100,000
Mural/Public Art Restoration and Landscaping Improvements Citywide	100,000
Community & Cultural Investment Total	\$950,000

Public Facilities	Approved Budget
Youth Shelter and Navigation Center	1,000,000
Public Facilities Total	\$1,000,000

FY 24 Mid-Year Elevate '28 Measure A Appropriation

Gold Medal Park Refresh Projects	Approved Budget
14th Street Park Vacant Parcel	750,000
Davenport Park (Phase III) - Basketball Court Improvements	500,000
DeForest Park Improvements	800,000
DeForest Park Playground Design	200,000
Drake Park & Cesar E. Chavez Master Planning	500,000
El Dorado Parking Lot Improvements	200,000
Hamilton Loop Greenbelt	500,000
Houghton Park Sports Complex	500,000
Hudson Park Improvements	250,000
MacArthur Park Rehabilitation	400,000
Martin Luther King Jr. Park Planning, Restroom Renovation, Critical Repairs to Community Center	700,000
Ramona Park Pool	500,000

Gold Medal Park Refresh Projects	Approved Budget
Ramona Park Signature Playground	250,000
Recreation Park Bandshell Improvements	200,000
Silverado Park Improvements	250,000
Silverado Park Signature Playground	200,000
Veterans Park Roof Replacement	350,000
Wardlow Park Community Center Enhancements	100,000
Gold Medal Park Refresh Total	\$7,150,000

Critical Facilities, Federal Grant Match & One-Times	Approved Budget
Critical Facilities Reserve	3,242
Critical Facilities, Federal Grant Match & One-Times Total	\$3,242

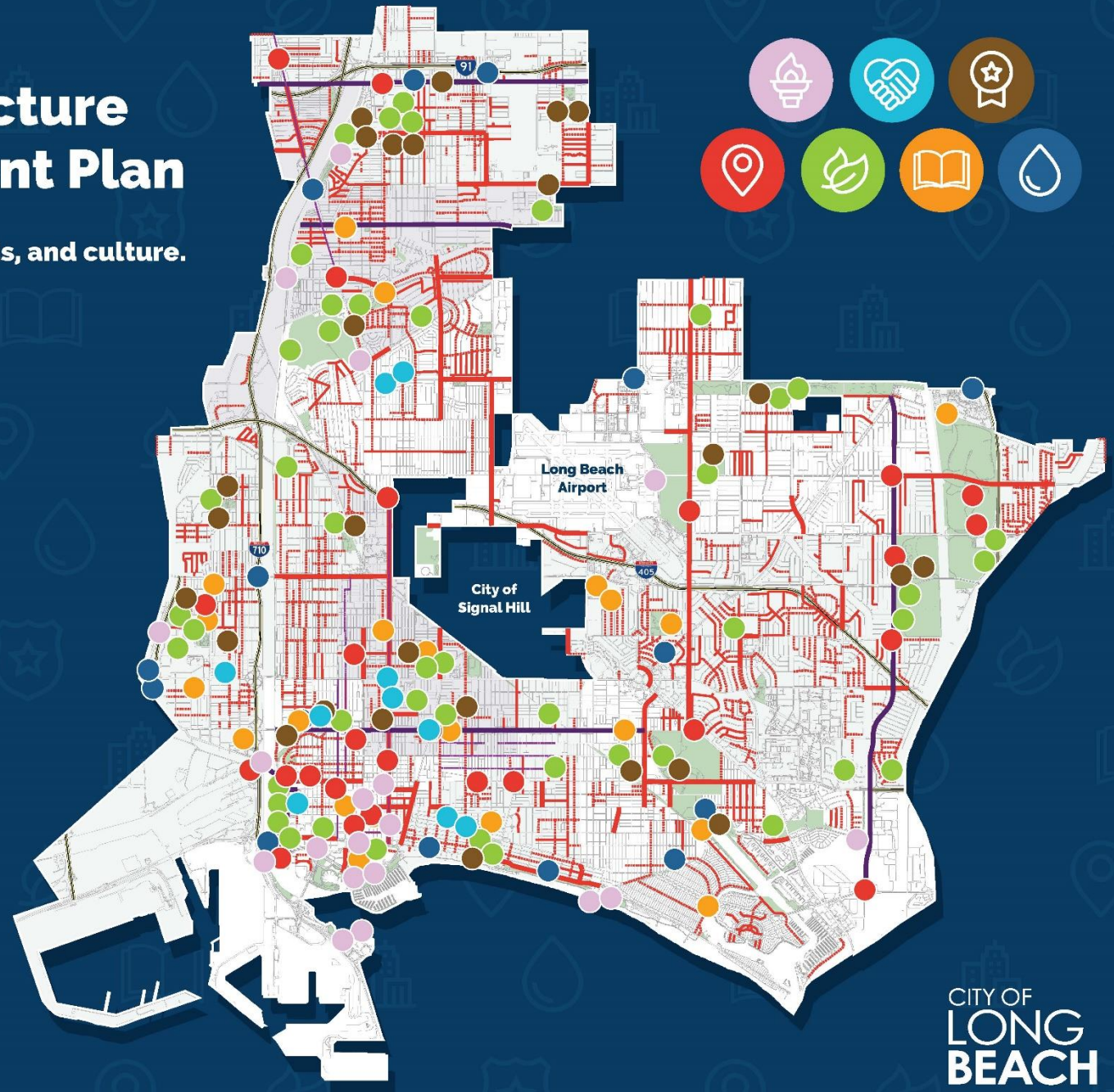
TOTAL MID-YEAR APPROPRIATION \$9,903,242

ELEVATE 28 Infrastructure Investment Plan

An investment plan to elevate Long Beach's parks, neighborhoods, and culture.

-  2028 OLYMPIC LEGACY
-  COMMUNITY & CULTURAL INVESTMENTS
-  GOLD MEDAL PARK REFRESH PROJECTS
-  MOBILITY & SAFETY IMPROVEMENTS
-  PARK IMPROVEMENTS
-  PUBLIC FACILITIES
-  RIGHT OF WAY, WATER QUALITY & CLIMATE ACTION

COMPLETION OF PROJECTS ESTIMATED TO OCCUR BETWEEN FY23-FY27 SUBJECT TO FUNDING AVAILABILITY. MAP REFLECTS CITY OF LONG BEACH INFRASTRUCTURE INVESTMENT PLAN, WHICH INCLUDES MEASURE A AND OTHER CAPITAL IMPROVEMENT PLAN FUNDING SOURCES SUCH AS TIDELANDS, MEASURE W, METRO LOCAL RETURN, SB-1, GAS TAX, AND GRANT FUNDING.



- To communicate the Elevate '28 plan to the public and serve a hub for project information, a dedicated website has been created.
- The website includes unique project information pages that provide project details such as scope, budget, location, target construction start and completion dates, amount of funding currently secured, and current phase of the project.
- The website allows users to search for projects by council district, project category, and via map view.
- Information will be regularly updated and is displayed through Power BI which allows the public to easily sort and filter the Elevate '28 information in greater detail.



Elevate 28'

An investment plan to elevate Long Beach's parks, neighborhoods, and culture.

SEE THE PROJECTS

Elevate '28 Projects

Historic, cultural and community investments.

- 2028 Olympic Legacy
- Community & Cultural
- Gold Medal Park Refresh
- Public Facilities



Wardlow Park Community Center Enhancements

[Learn More](#)



Veterans Park Roof Replacement

[Learn More](#)




Silverado Park Signature Playground

[Learn More](#)

Search Elevate 28' Projects

Find projects in your District.

studebaker

Studebaker Major Corridor Improvements

Elevate 28' Project Categories

Click the icons to visit the relevant project category page.



2028 Olympic Legacy



Community &
Cultural Investments



Gold Medal Park Refresh



Mobility



Park Improvements



Public Facilities



Right of Way

Explore All Elevate '28 Projects

Find nearby projects by searching your zipcode below.

Search radius 15 mi ▾ Results 200 ▾

SEARCH

Anaheim Street Major Corridor Improvements
Anaheim St
Long Beach CA Various

Rose Park Gazebo Improvements
800 Orizaba Ave
Long Beach CA 90804

Brewitt Library Improvements
4036 E Anaheim St
Long Beach CA 90804



14th Street Park Improvements

Council District #: 1
Address: Cedar Ave & W 14th St
Zip Code: 90813



Community Benefits: Improve recreational access; extend useful life of current city asset; enhance visitor experience

The 14th Street Park Improvement project will renovate existing park amenities, make playground improvements, upgrade lighting, and install new park furnishings.

Elevate '28 Category:
Park Improvements

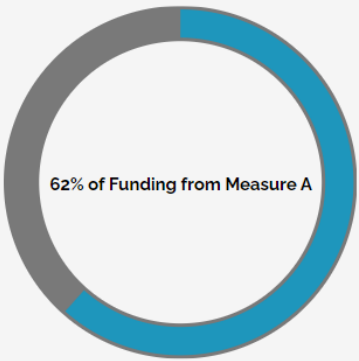
Current Status:
Design

Estimated Completion Date:
2024

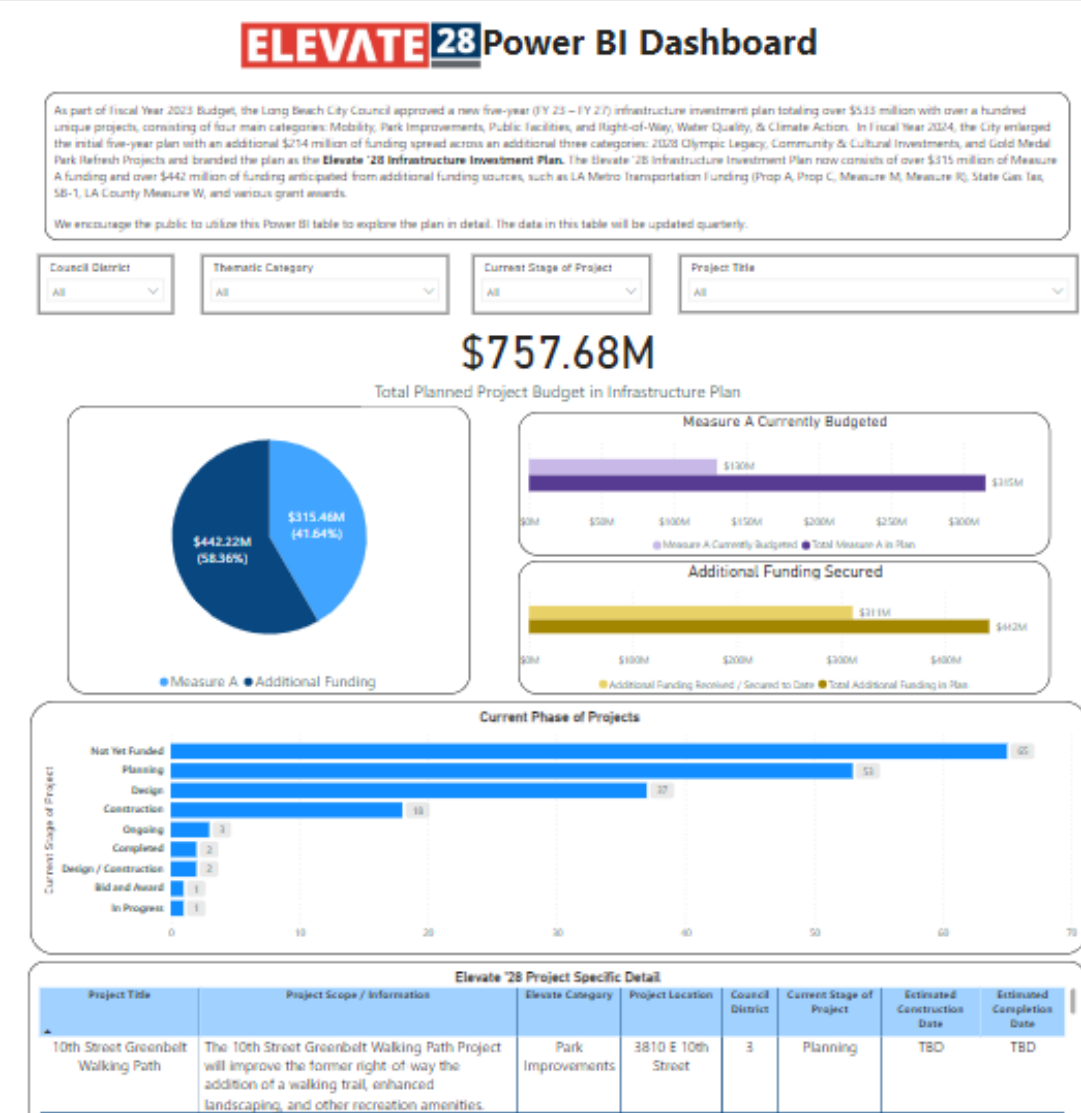
Estimated Construction Date:
November - December 2023

Total Project Budget
\$1,300,000

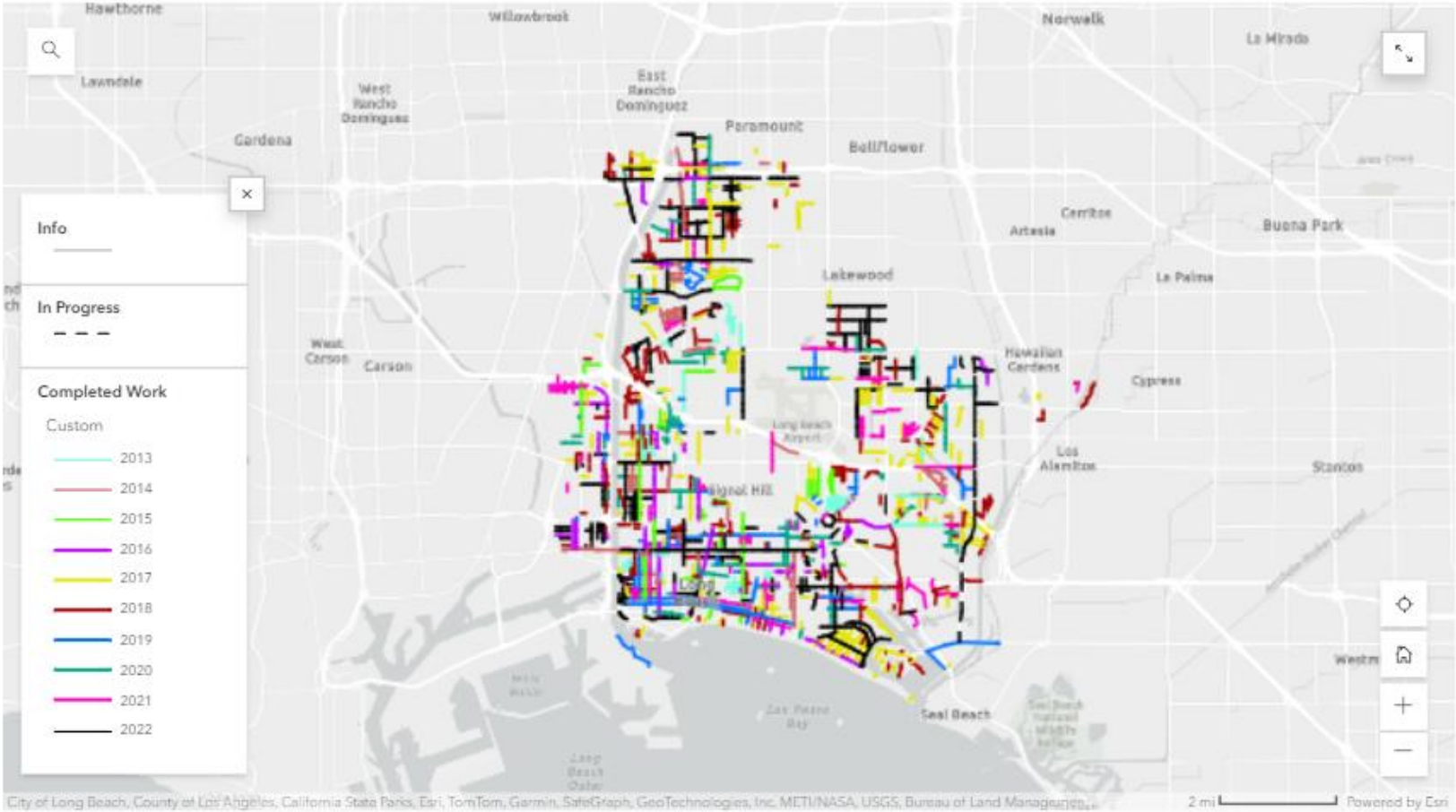
Funding Breakdown



- Measure A Funding: \$ 800,000
- Additional Funding: \$ 500,000



Completed Projects in Long Beach



Displayed above are completed rehabilitations since 2013, symbolized by year.

Measure A Infrastructure Communication Update

- **Updated Attachment A:** Updated quarterly with all infrastructure projects funded with Measure A. Includes updated project status as well as up-to-date Measure A budget per project. New format/layout!
- **Measure A Sheets:** Updated quarterly and includes all infrastructure projects funded with Measure A. Includes project photo, detailed scope, community benefits, current project status, estimated completion date, and up-to-date Measure A budget. Each project has a unique sheet. All sheets are uploaded to the Measure A website and provided to CAC members.
- **Current Measure A Website:** Public website updated every quarter, which includes Measure A sheets, a status of every Measure A infrastructure project, and an ArcGIS map where the public can access project information. <https://www.longbeach.gov/citymanager/measure-a/>
- **Upcoming Elevate '28 Website:** A new website dedicated to the Elevate '28 Infrastructure Plan is in final development. This new website will include detailed information for every project in the Elevate '28 Plan, including a Power BI dashboard where the public can dig into the plan with ease. Planned release in March 2024.
- **Upcoming FY 17 – FY 22 Measure A Website:** Current Measure A website to be revamped using the Elevate '28 website as a model (interactive, Power BI dashboard, project pages for all Measure A funded projects, etc.) for Measure A projects funded from FY 17 to FY 22.



Questions?

CITY OF
LONG
BEACH