



MacArthur Park Rehabilitation Project Contract Award

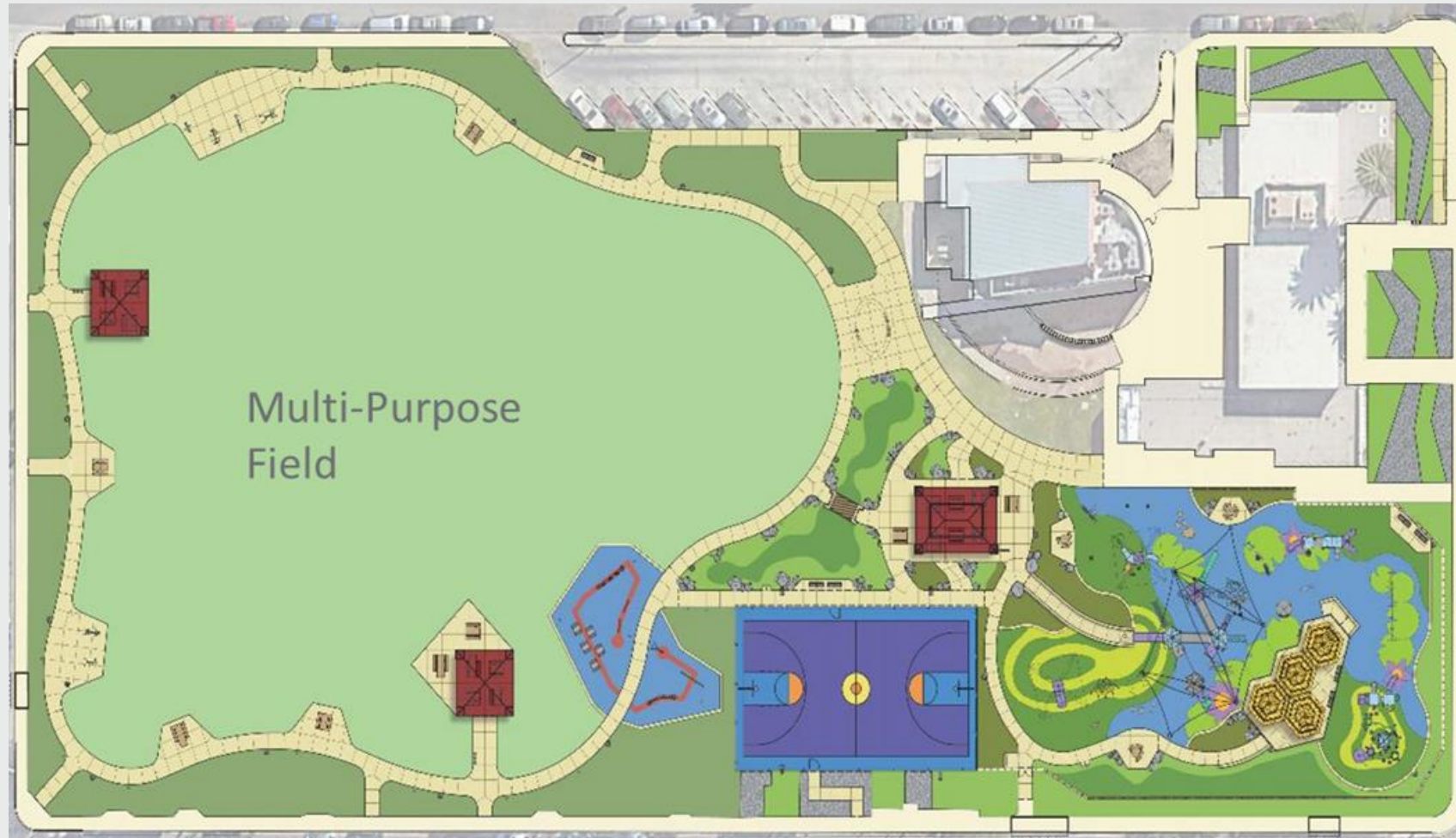
City Council Meeting – January 16, 2024

Departments of Public Works and Parks, Recreation and Marine

MacArthur Park Rehabilitation Project

- MacArthur Park is a highly dense neighborhood. Almost 17% of Long Beach's population is located within a one-mile radius of the park.
- A 2016 Needs Assessment by Los Angeles County Department of Parks and Recreation, indicated 73% of MacArthur Park community had a very high or high need for quality park space.
- In 2018, California voters passed the Parks, Environment, and Water Bond (Prop 68), authorizing \$4 billion in new funding
- In 2019, the City in partnership with Council District 6, AOC 7, Friends of MacArthur Park, Los Angeles Neighborhood Land Trust (LANLT) and City Fabrick completed the engagement and development of a Vision Plan and applied for Prop 68 funding
- In 2022, Senator Lena Gonzales and Speaker Emeritus Anthony Rendon helped secure \$8.5M to support MacArthur Park construction. The City began re-engagement with the Community to advance the detailed design
- The design goal reflects the community's programming priorities, accessibility, and diversity of recreational elements

Park Development Plan



MacArthur Park Signature Playground

- Playground theme inspired by Southeast Asian/Cambodian riverine landscape
- Safety surfacing reminiscent of water and features colorful lily pads and flowers
- Communications and play boards are located under “Thatch hut” roofs
- Animal sculptures unique to the Mekong River, and southeast Asian, such as the Irrawaddy Dolphin and Baby Asian elephant



Community Gathering and Picnic Areas

- Design prioritizes celebrations, events, and community gathering
- Park features both group picnic shelters and smaller picnic areas to accommodate a variety of gathering types
- At the heart of the park is the Picnic Pagoda, the largest of the group picnic areas that feature an ornate roofline inspired by Southeast Asian architecture



Multi Purpose Lawn and Walking Loop

- Rehabilitate the great lawn for a variety of uses (special events, gatherings, sports uses)
- Walking loop with fitness equipment and stations surrounding path
- Brand new pedestrian scale lighting and security cameras for safety and considerations



New Full Size Basketball Court and Landscaping

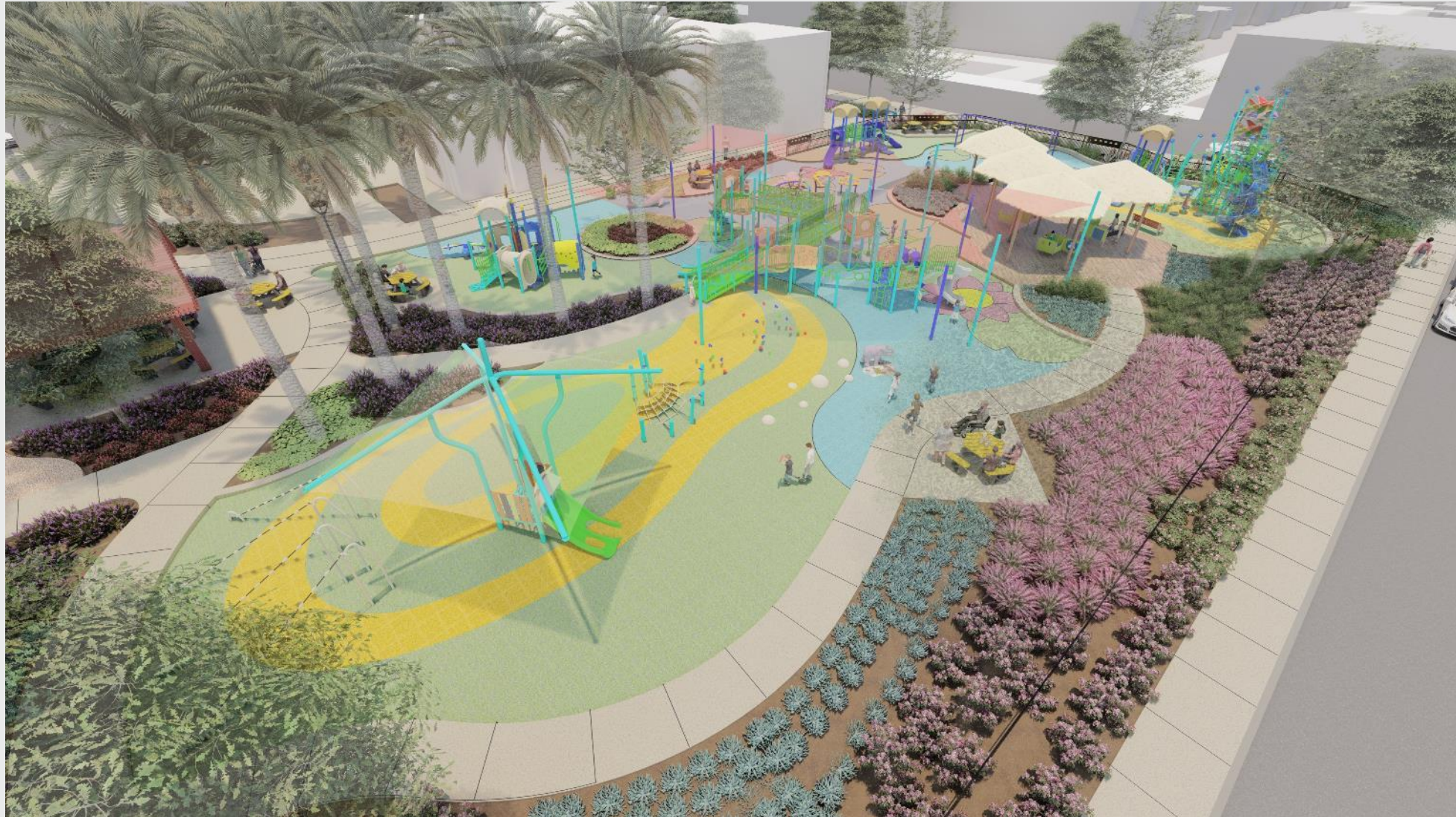
- Include a full size basketball court with new amenities and lighting
- New fencing at sports courts and playground
- Native landscaping throughout and around park



MacArthur Park Rehabilitation Project



MacArthur Park Rehabilitation Project



MacArthur Park Rehabilitation Project



MacArthur Park Rehabilitation Project



MacArthur Park Rehabilitation Project



MacArthur Park Rehabilitation Project



Project Fiscal Impact

Estimated Project Cost

- Contract amount of \$7,259,301 (inclusive of a 13% contingency of \$835,141)
- Total project cost is estimated at \$10,500,000

Funding Sources

- \$8,500,000 Department of Parks and Recreation State Grant
- \$1,000,000 in FY24 Measure Elevate '28 fund
- \$1,000,000 County Measure A



Thank you

Eric Lopez

Director of Public Works

Eric.lopez@longbeach.gov