



# LONG BEACH HEALTH AND HUMAN SERVICES

**Safe Passage Program**

**March 19, 2024**

# Long Beach Safe Passage Program

## Agenda

- Public Health Approach to Violence
- Long Beach Advancing Peace Initiative
- Safe Passage
  - Outcomes
  - Providers
  - Convenings

# Advancing Peace – A Public Health Model



# Advancing Peace – A Public Health Model

## ADVANCING PEACE

A public health model\*

### Intervention/Violence Interruption

Redirect and invest in individuals who are at highest risk of engaging in violence

Create support for and invest in those at highest risk of being victimized by violence

Detect, anticipate, and interrupt multiple forms of violence

Remove graffiti or other symbols that encourage violence or deter social activity

Respond to incidents to prevent or lessen further violence from occurring

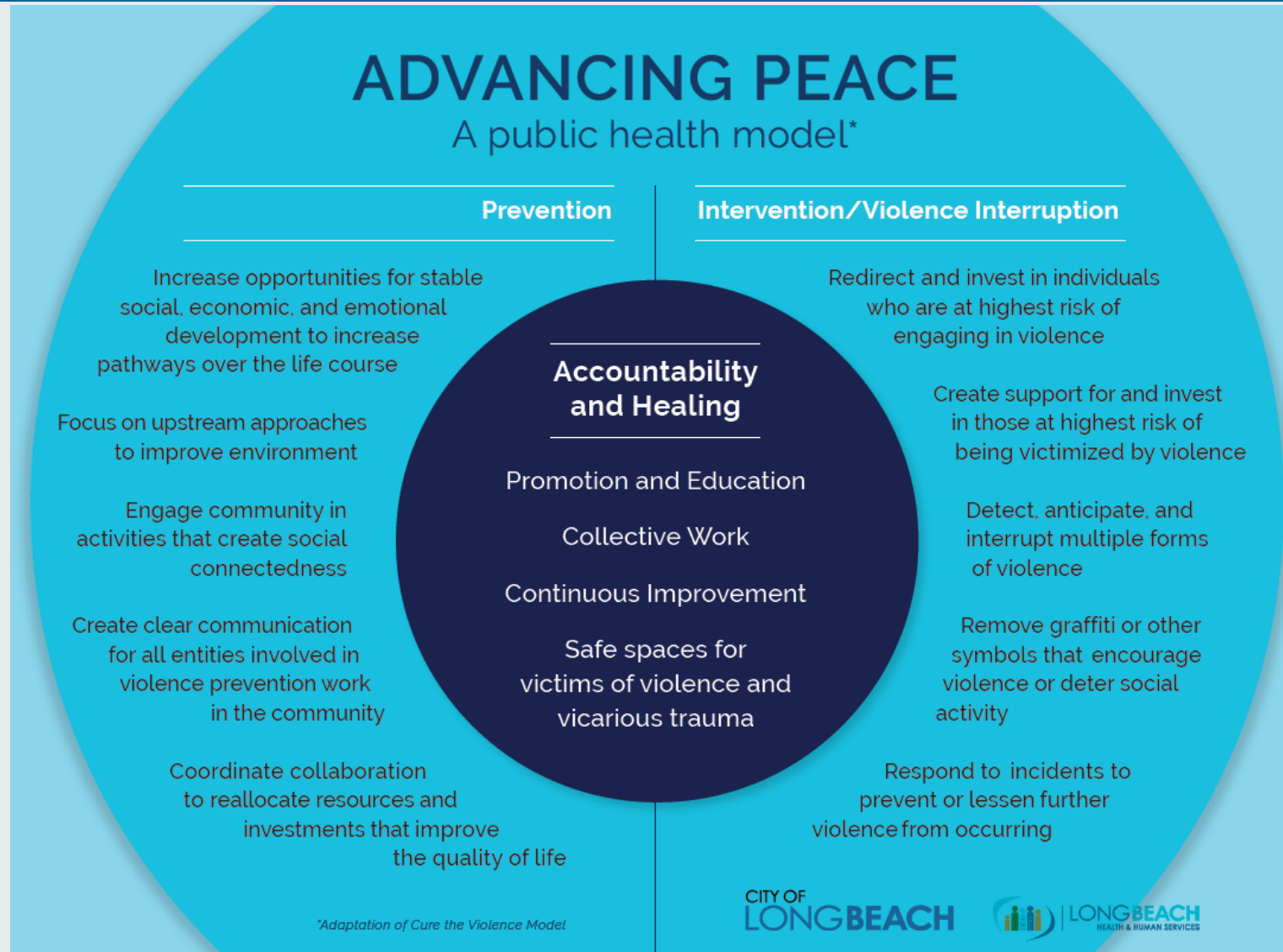
*\*Adaptation of Cure the Violence Model*

CITY OF  
LONGBEACH





# Advancing Peace – A Public Health Model



# Advancing Peace Initiative

## Long Beach Advancing Peace Initiative

**PROGRAM SUMMARY:** The Long Beach Advancing Peace Initiative (LBAP) improves safety and well-being for everyone in Long Beach by using a collective impact approach. The four goals of LBAP are to:

- Increase social connectedness
- Support economic opportunities
- Build safe and healthy neighborhoods
- Use trauma informed systems

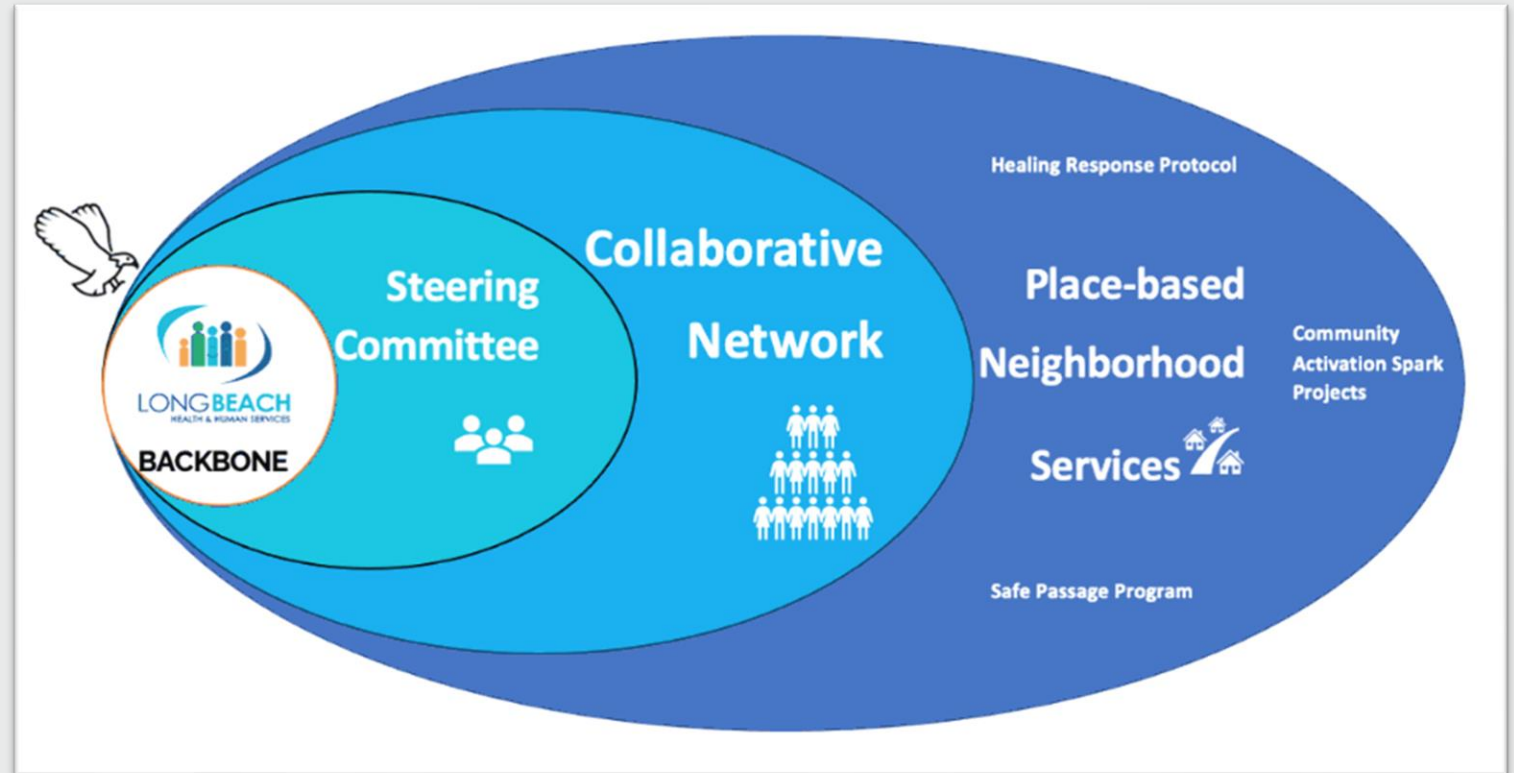


# Advancing Peace Initiative

## Long Beach Advancing Peace Initiative – Steering Committee

The LBAP formalized a community advisory group, now known as the LBAP Steering Committee, to help guide the implementation of Violence Prevention and Intervention.

- Long Beach Advancing Peace Steering Committee (LBAP-SC) leads community engagement efforts to increase social connectedness, brings resources directly into neighborhoods, and informs the city on priority areas to address safety.



# Long Beach Safe Passage

## Long Beach Safe Passage

- Safe Passage is a program that seeks to increase safety among students, parents and community members as they navigate to and from public spaces, including school and parks, through the implementation of strategically placed adult monitors along frequently used transit routes.

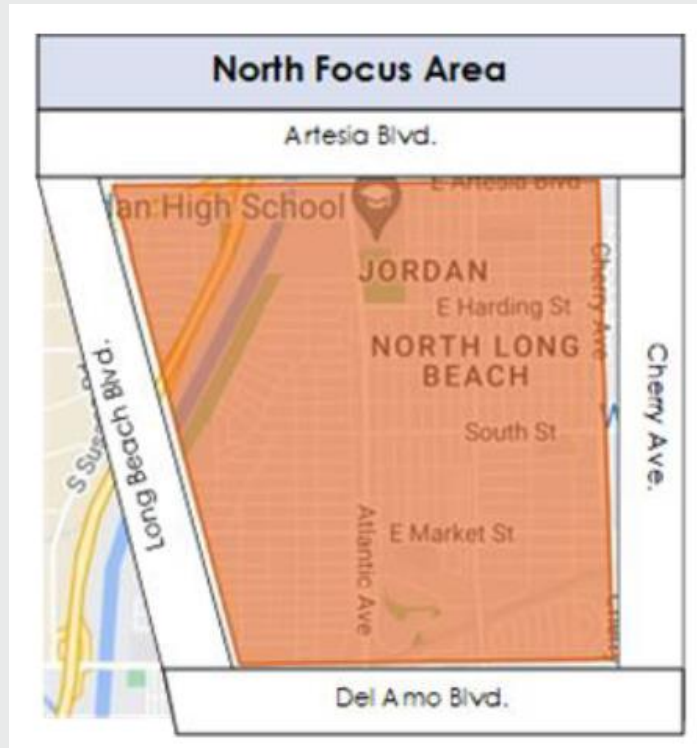




# Long Beach Safe Passage – City Funded Programs

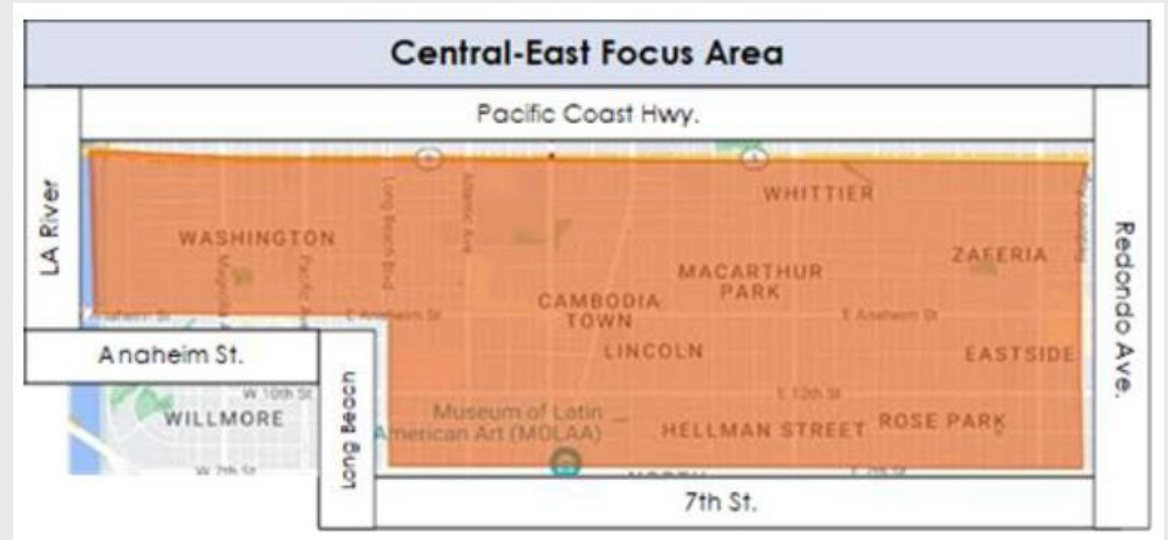
## 2<sup>nd</sup> Call

- Focus Area: North Long Beach
- Safe Passage Model: Professional/Paraprofessional Model
- Walking routes
  - Jordan High School
  - Houghton Park



## DAYS Long Beach

- Focus Area: Central Long Beach
- Safe Passage Model: Volunteer Model
- Walking routes
  - Franklin Middle School
  - Lincoln Elementary School
  - Whittier Elementary School



## Anticipated Outcomes

- Increase number of students walking to and from school safely
- Reduce the involvement of youth in gangs
- Increase perception of safety for students and community members
- Increase social connectedness and engagement among participating school site volunteers, parents and students

# Long Beach Safe Passage

## Other Existing Safe Passage Programs (non-City funded)

- Centro CHA
  - Location: Santa Fe Corridor, including Stephens Middle School and Cabrillo High School
  - Funded by LBUSD
- Habitat for Humanity
  - Location: Washington Middle School
  - Funded by Habitat for Humanity Greater Los Angeles

## Other known previous community efforts (non-City funded)

- F.O.C.U.S.
- Love Beyond Limits
- Safer LBUSD Campaign

# Long Beach Safe Passage

## Next Steps

- Anticipated launch is March 2024
- Health Department to host monthly convenings for all Safe Passage Providers
- Ongoing discussions with departments and partners
- Collect and analyze data to inform programming





**Thank you**

**Teil Samuels – Violence Prevention Manager**

**Stephanie Chmelik – Acting Community Impact  
Division Officer**

**Erica Valencia-Adachi - Collective Impact Bureau  
Manager**

**Alison King- Health and Human Services Director**