

Code Enforcement Bureau

Basic Overview

Angel Arredondo - Enforcement Bureau Officer

What do we do?

City of Long Beach Code Enforcement Briefing

Primarily deal with private property.



What do we do?

City of Long Beach Code Enforcement Briefing

The Code Enforcement Division responds to complaints of violations of the Long Beach Municipal Code that include:

- Substandard Buildings – deteriorated abandoned buildings
- Property Maintenance - trash cans visible from the street or alley
- Inoperative Vehicles - vehicles stored on residential property
- Weed Abatement – overgrown weeds, trash or debris in yard areas
- Land Use Violations – room additions constructed without permits

What do we do?

City of Long Beach Code Enforcement Briefing

Most Common Violations:

- Outside storage or junk, debris, trash in front, side, or rear yards visible from public view or neighboring properties
- Overgrown vegetation
- Dead landscaping
- Unpermitted alterations to a dwelling or structure without permits
- Unpermitted interior alterations to a dwelling or structure (electrical, plumbing, mechanical, building)
- Garage conversions without permits
- Trash cans stored in public view
- Overflowing trash containers or dumpsters
- Unpermitted or illegal signs



Accountability

City of Long Beach Code Enforcement Briefing

What happens if responsible persons do not comply:

\$100.00 per violation for the first offense in a 12-month period

\$200.00 per violation for the second offense in a 12-month period

\$500.00 per violation for the third and subsequent offenses in a 12-month period



Code Enforcement Programs

- Proactive Rental Housing Inspection Program
- Short-Term Rental Program
- Vacant Lot Monitoring Program
- Garage Resale Program
- Weed Abatement Program

BEAC Members Things to Consider

Code enforcement staff:

- Take pictures of violations / conditions
- Notify responsible parties via USPS (Mail)
- Post Notices and/or citations on property
- Make attempts to notify all interested parties via USPS, phone calls, in person
- May refer substandard building cases for BEAC review
- May refer appeals for program fees

BEFORE

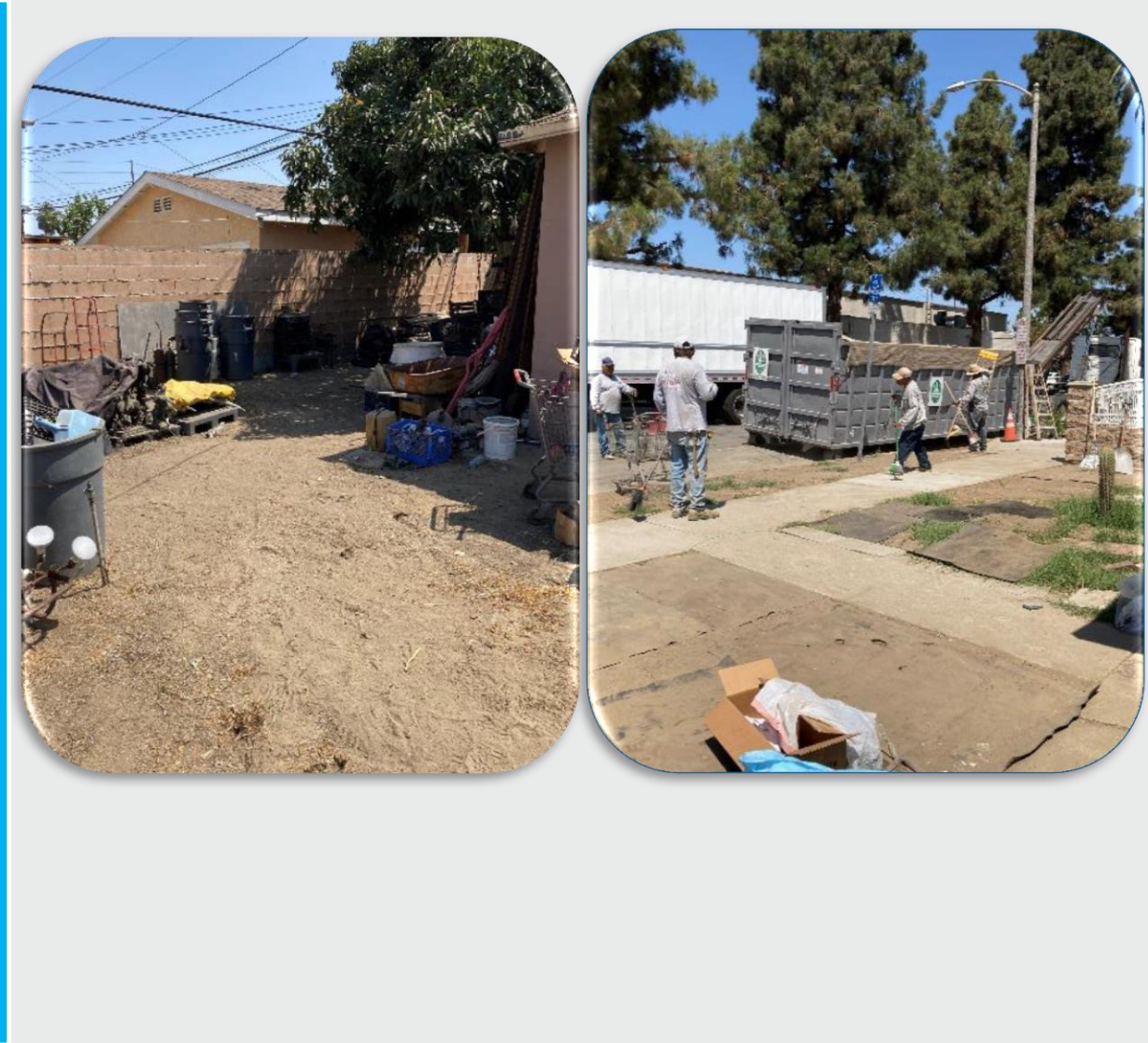
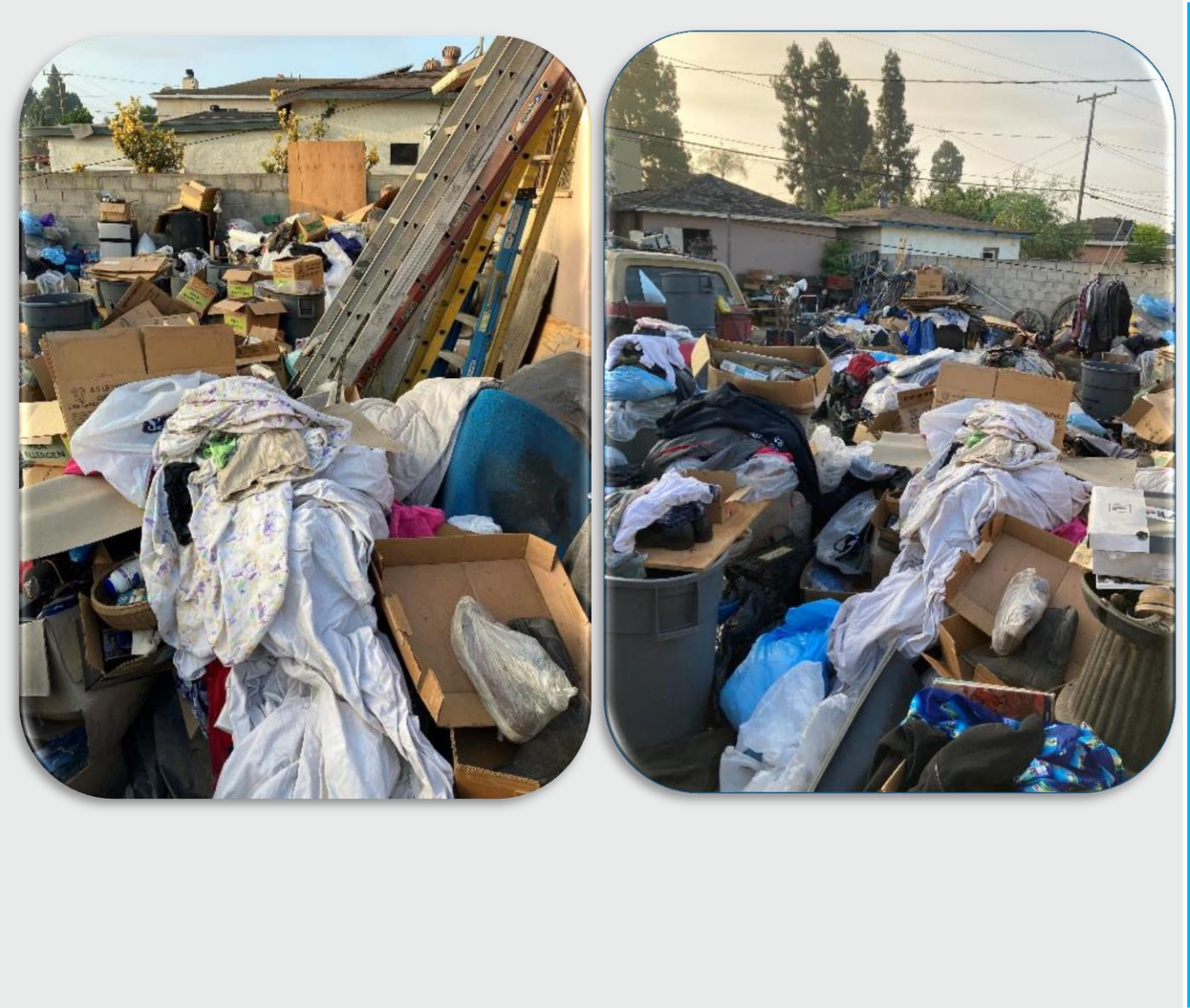


AFTER



BEFORE

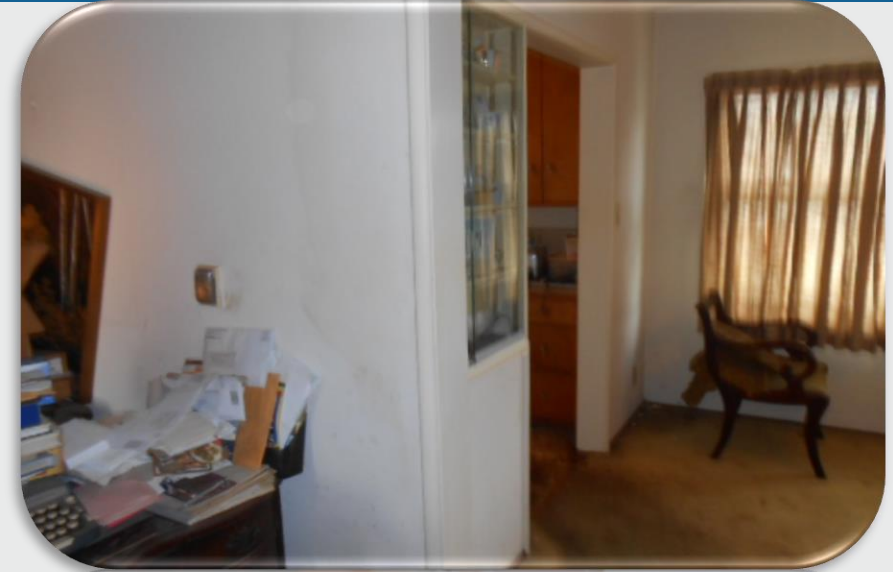
AFTER



BEFORE



AFTER



BEFORE



AFTER

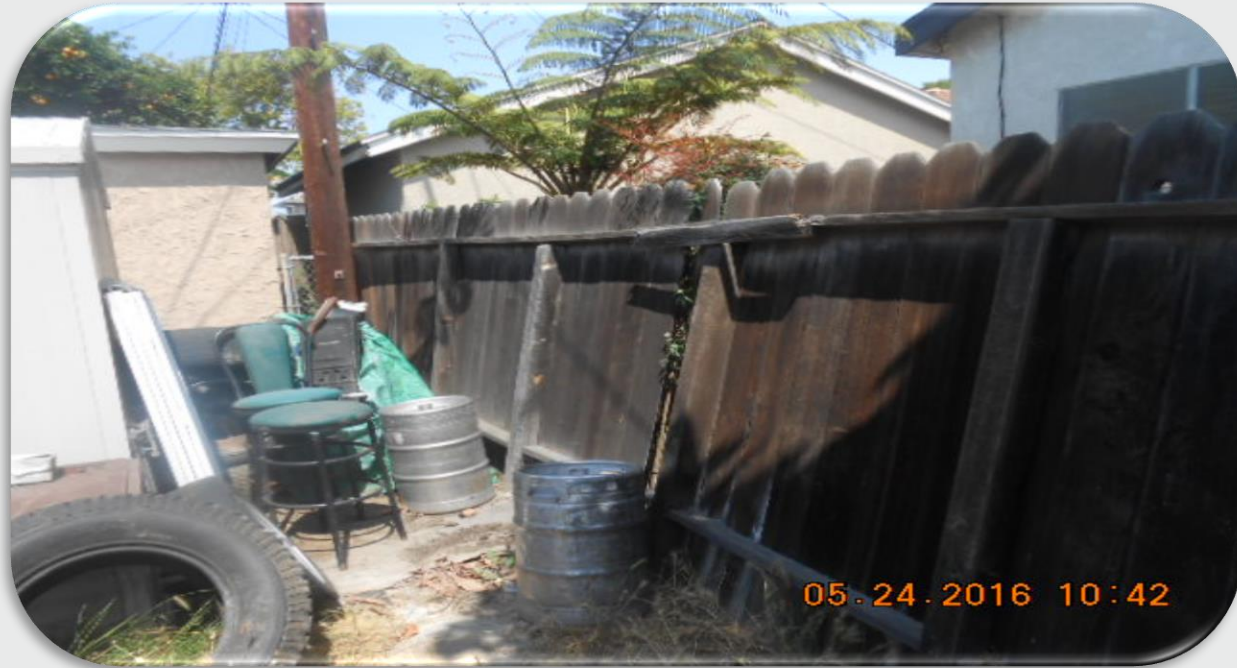


BEFORE

AFTER



BEFORE



AFTER



BEFORE



AFTER



BEFORE



AFTER



BEFORE



AFTER



BEFORE



AFTER



BEFORE



AFTER





Thank you

Angel Arredondo
Code Enforcement Bureau Officer
562-570-2633 (Code Enforcement Hotline)