

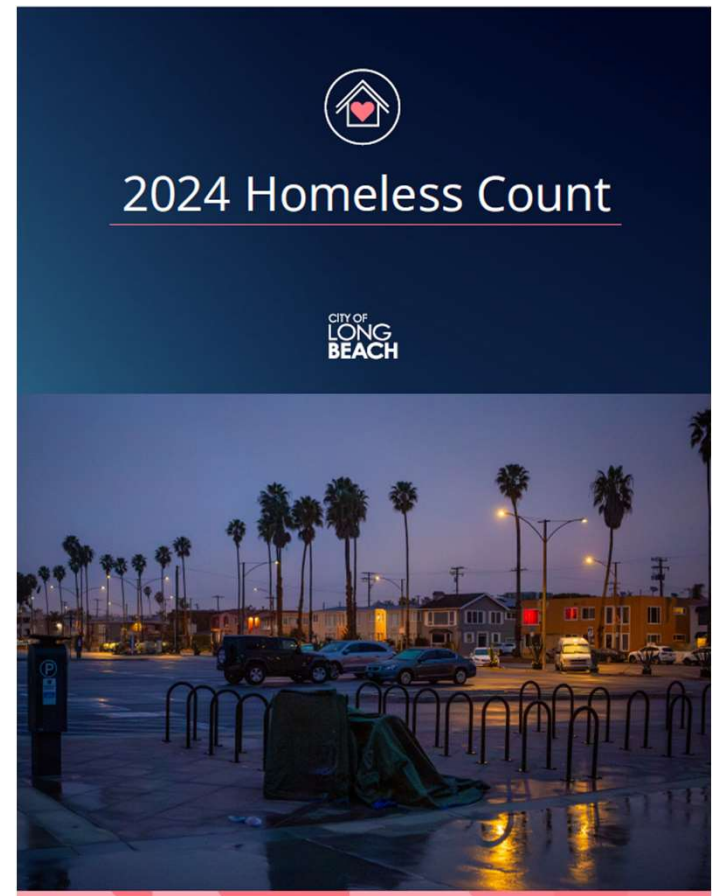


# Long Beach Homeless Count 2024



# Overview

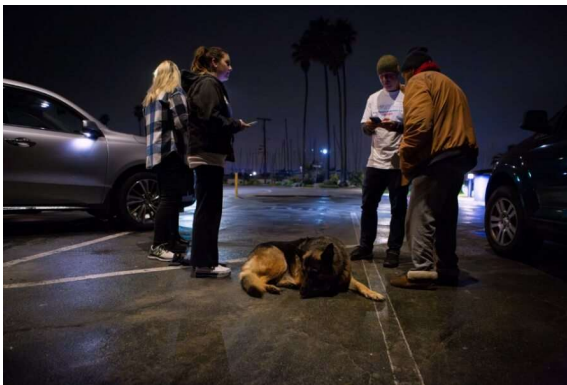
- Long Beach has committed to conducting an annual full point in time census of who is experiencing homelessness
- Data is provided to give context around what is occurring. Determining our progress towards goals and performance and determining funding allocations
- Improved our engagement with our specialized count, added new count maps to increase volunteers, introduced an approach for surveys in our shelters



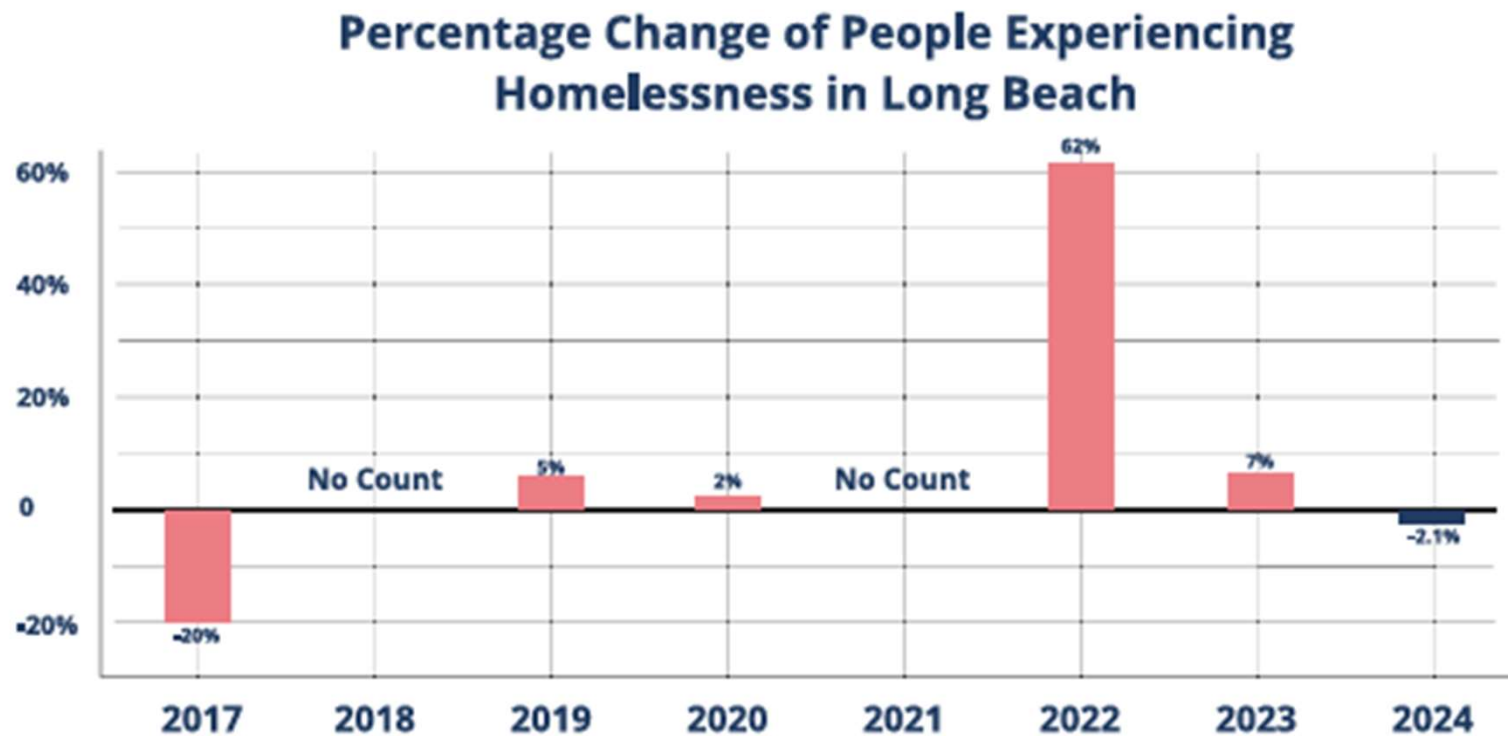


# 2024 Homeless Count

- Conducted on January 25<sup>th</sup>
  - 284 people/volunteers started at 5 a.m.
  - 20 people supported the operations at the headquarters
  - Many more people supported in specialized count areas, doing surveys at shelters and putting together hygiene kits



# Comparison Over Time



# What Does the Data Tell Us



# High Level Numbers

## Total Count



**3,376**

People were experiencing homelessness on the morning of  
**January 25, 2024**

## Chronically Homeless



**1,705**  
50.5%

■ Sheltered: 367  
■ Unsheltered: 1,338

## Unsheltered Count



**2,455**  
72.7% Unsheltered

## Sheltered Count



**921**  
27.3% Sheltered

## First Time Homeless

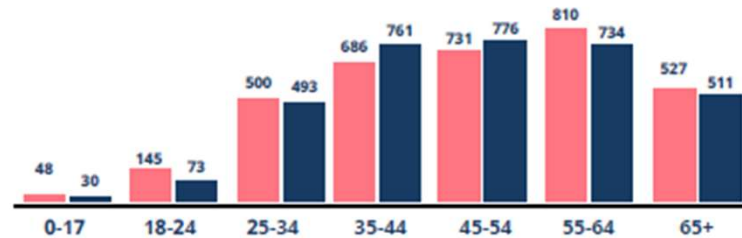
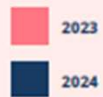


**53.0%**

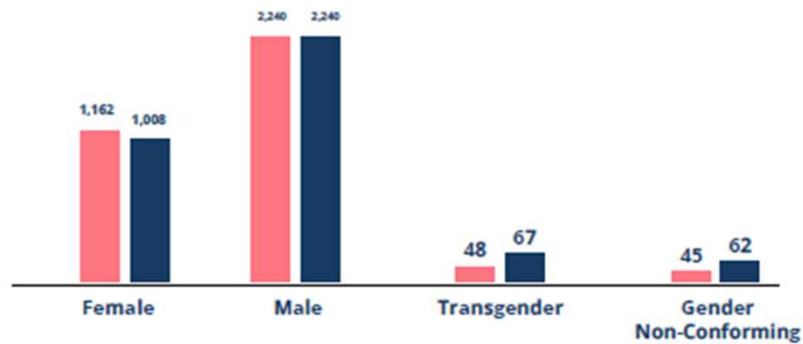
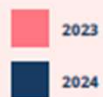
Reported that this is their first episode of homelessness

# Demographics

## Age 2024



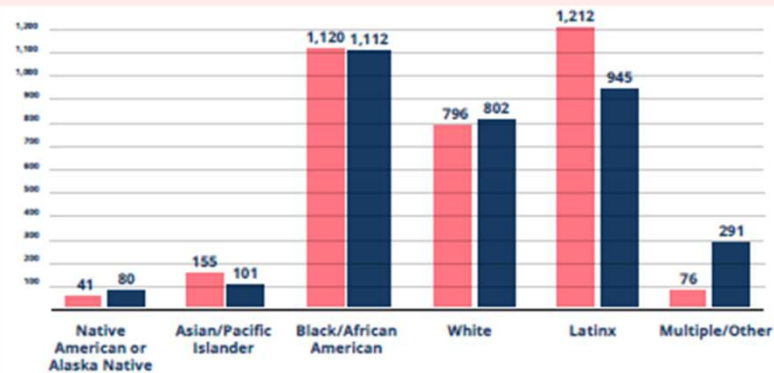
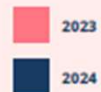
## Gender 2024



# Demographics

## Race (Including Latinx in Race)

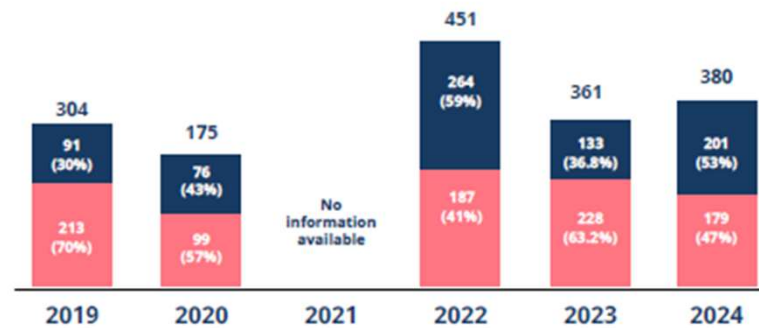
2024



## Veterans



20% decrease



# Demographics

## Living In Vehicles



**786 (32%)**

of unsheltered people are  
living in a vehicle (car or RV)

## LGBTQ+



**11.2%**

2023

**7.7%**

2024

## Students



**7.4%**

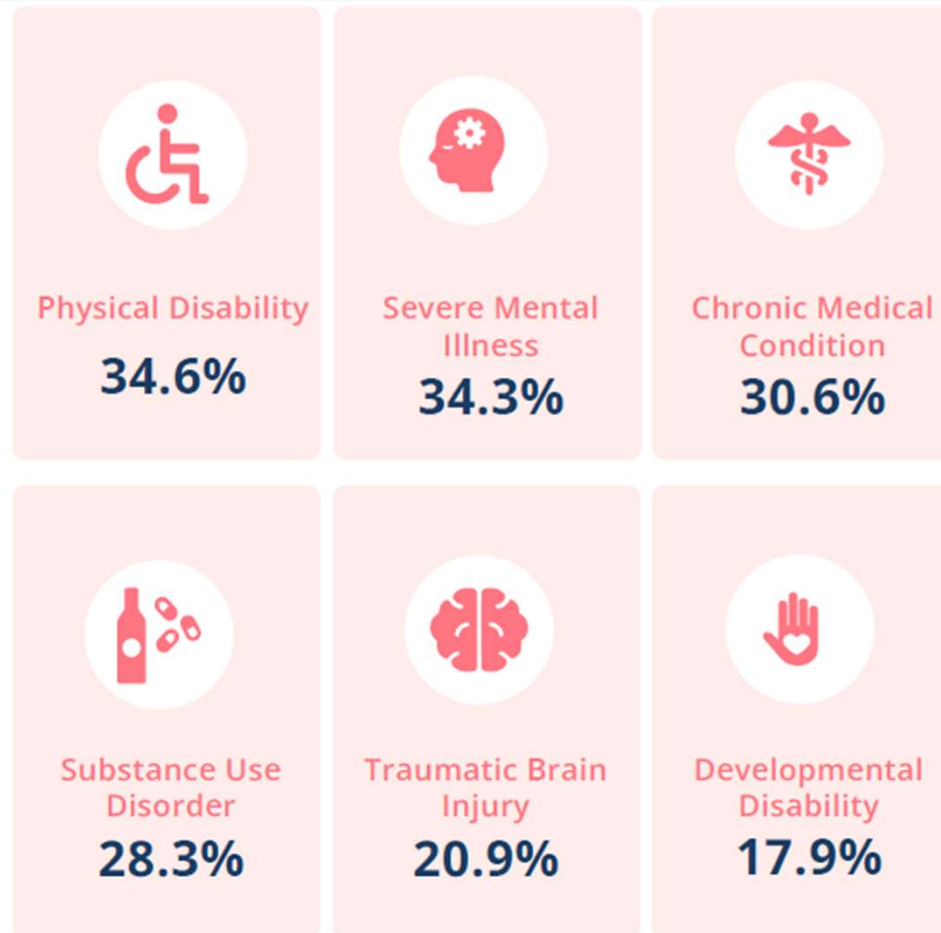
2023



**6.6%**

2024

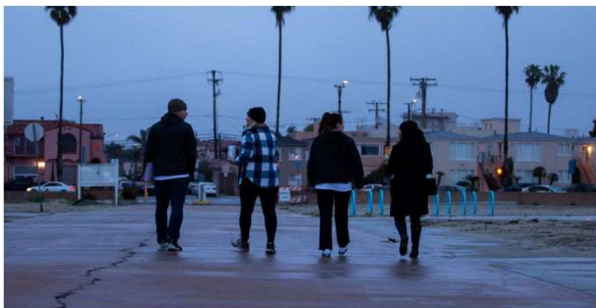
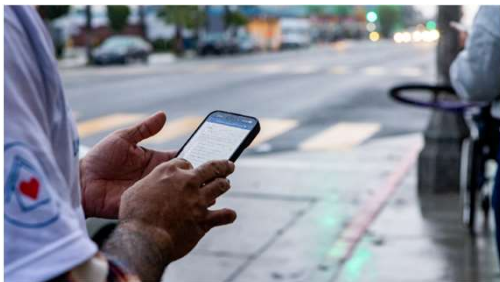
# Demographics





# Additional Analysis

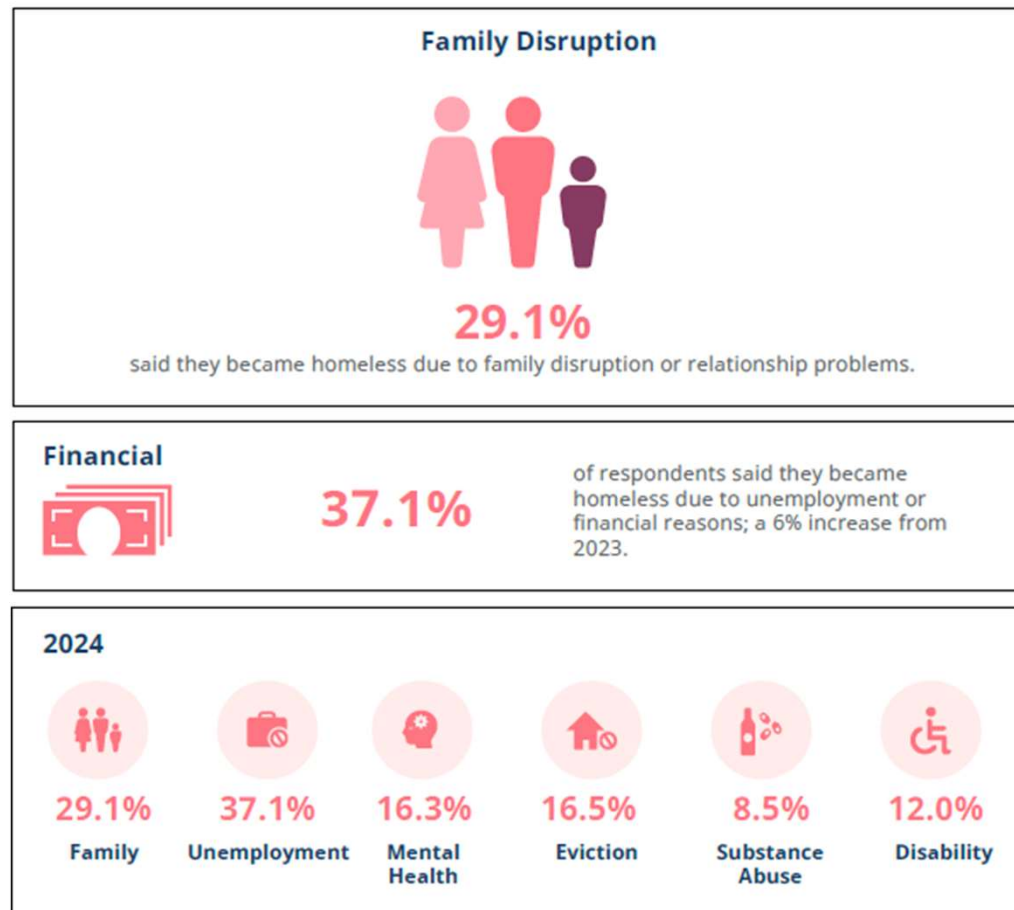
- Newly homeless trends
- Changes in where people are losing their housing
- Youth specific numbers



# What is Leading to Homelessness in Our Community



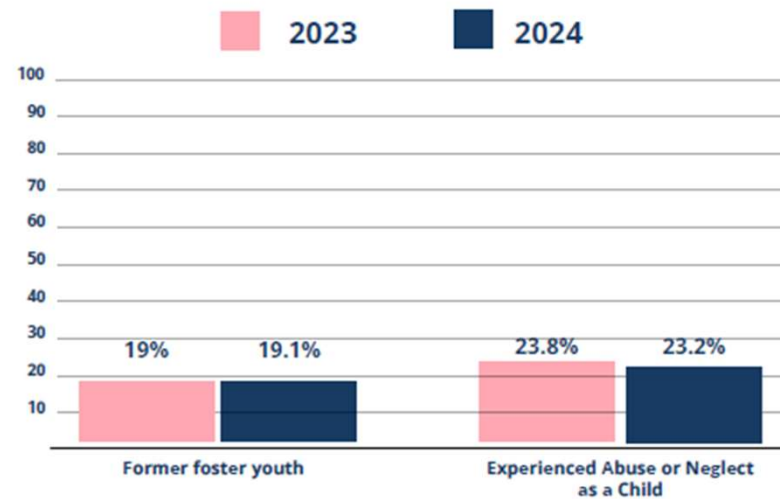
# Self Reports on Causes



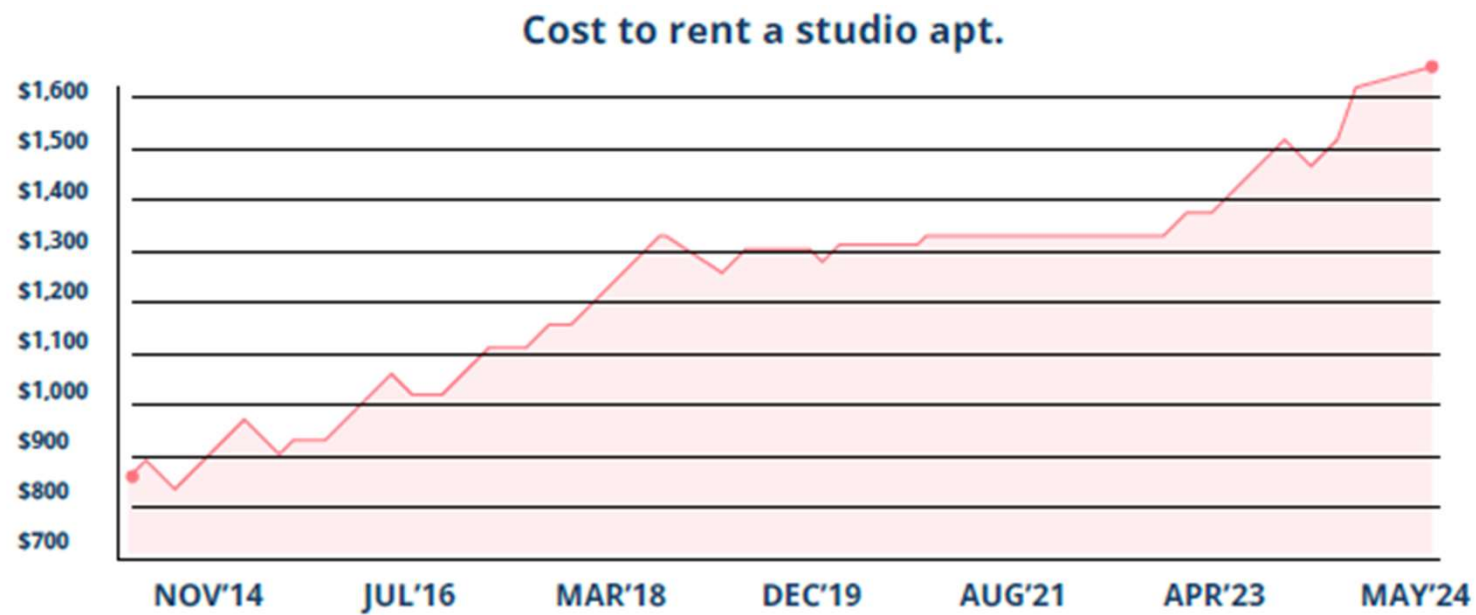
# Early Childhood Trauma

## Childhood Trauma

People who experienced abuse and neglect are far more likely to experience homelessness than those who haven't, a person who has spent time in foster care is nearly 40x more likely to be experiencing homelessness than someone who has not.



# Costs of Rent





# Thank you

**Dalton Dorr**  
**Senior Data Analyst**

**Paul Duncan**  
**Homeless Services Bureau Manager**